

Historic, Archive Document

Do not assume content reflects current scientific knowledge, policies, or practices.

62.71

E 1945

Ind.

Planting Guide



LIBRARY
 FEB 20 1945 ★
 U. S. Department of Agriculture

EXTENSIVE GROWERS OF
 GENERAL NURSERY STOCK for OVER HALF A CENTURY

Carlton Nursery Company

FOREST GROVE, OREGON

OVER HALF A CENTURY OF DEPENDABLE SERVICE

It is with great pride and satisfaction that we offer commercial planters, orchardists, home owners, and fruit stand operators the most complete selection in the West, of high quality, thrifty, hardy nursery stock, grown from the finest, bud selected fruit on the Pacific slope and from the newest proven sorts.

We offer no untried varieties, each has a record of proven production.

The Broadest Guarantee Ever Made . . .

We guarantee every plant, tree, or shrub that we ship out to be free from disease, true-to-name, and to arrive in perfect growing condition. If for any reason whatsoever, you are not satisfied that you have received 100 cents in value for every dollar sent us, we will refund your money. Our policy of "Every Customer a Satisfied Customer" means all that it implies, and we are here to give **absolute satisfaction**.

NEW LOCATION

For 52 years our headquarters have been located in Carlton, Oregon. NOW, for better service to our customers we have moved our Office and Packing Plant 21 miles nearer our Nursery Fields and Propagation Grounds.

DISPLAY and SALESYARD, OFFICE and PACKING PLANT, one mile east of Forest Grove on Portland Forest Grove Highway.

New Mail Address—**CARLTON NURSERY CO., FOREST GROVE, OREGON.**

WE PAY ALL SHIPPING CHARGES

In cooperation with the war effort, we encourage you to take advantage of our Freight Paid Service. However, if you are in the vicinity of Forest Grove, or plan a trip to the seashore by way of Wolf Creek or Wilson River highway—please visit our Display Grounds.

Information

PLANTING SEASON: November 1st through April 1st.

TIME TO ORDER: Order now while our stock is complete and you will receive the finest of selections.

TERMS OF PAYMENT: Customers will please forward cash with the order. If to be sent C. O. D., send 25 per cent cash with the order.

Dependability

The **CARLTON NURSERY COMPANY** of **FOREST GROVE, OREGON**, have for the past 54 years been engaged in the growing and shipping of **HIGHEST GRADE NURSERY STOCK**, to all sections of the country. **DEPENDABILITY** in trees is not measured by Price; however this list contains Values heretofore not found offered by Reliable Nurserymen.

Bud Selection

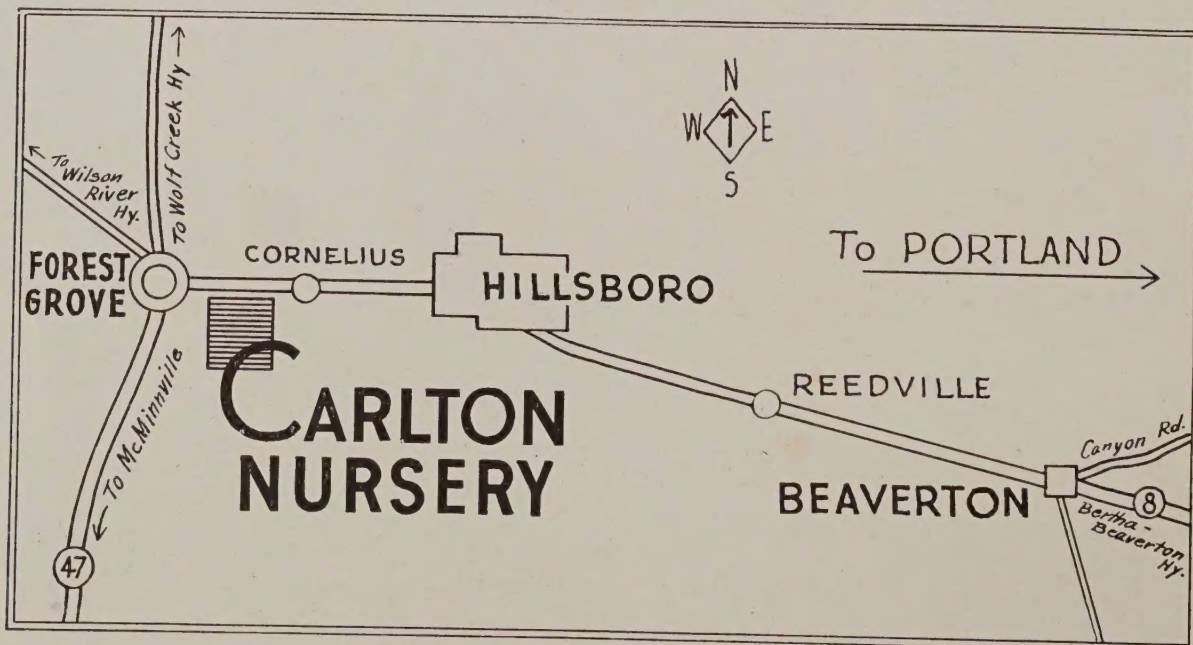
SUCCESS IN FRUIT AND NUT TREE PLANTING depends solely on the selection of **BUDS** from Trees producing quality as well as quantity and to have been budded on the proper variety of Root systems adaptable to various soil conditions. **WE ACCEPT THIS RESPONSIBILITY.**

OUR STOCK is grown by cultivation. The deep, rich sandy loam of our **VALLEY NURSERIES** at **FOREST GROVE** enable us to supply strong, hardy, vigorous trees, with highly developed Root Systems.

We have thousands of satisfied customers and solicit inquiries from new customers and **COMMERCIAL PLANTERS**. We assure you that your order will receive our careful personal service and attention. Submit your order today.

Customers

You can plant our stock with safety. Order today. We accept the solemn obligation of Guiding Home and Commercial Planters.



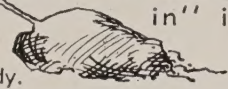
Illustrated Planting Instructions Sent with Every Order

HOW TO PLANT FRUITS. BERRIES. ASPARAGUS

TREES should be planted as soon as possible after they arrive. Keep moist until planted. Do not expose roots unnecessarily to sun or wind. If not planted immediately "heel-in" in moist soil.

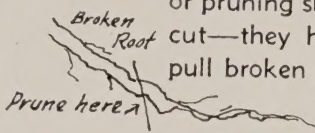
①

COVER with wet burlap or wet newspaper until planting holes are ready.



②

PRUNE all broken roots with a sharp knife or pruning shears. Make a clean cut—they heal quickly. Never pull broken pieces off.

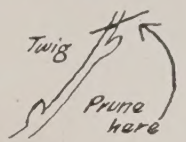


③

SPREAD roots out in a natural position and tamp soil firmly about roots. Water well.

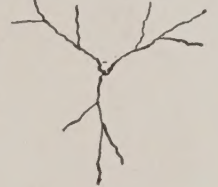
④

PRUNE THE TOP GROWTH. Young trees may have from one to several small twigs when planted. These develop into the main branches later on.

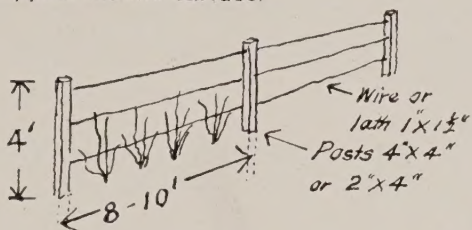


It is important to carefully select the branches to leave so that the top of the tree will be well balanced, sturdy and strong. Heavy bearing trees should be disbudded for larger, finer flavored fruits.

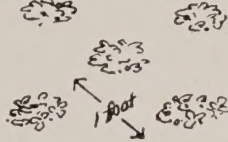
TOP VIEW



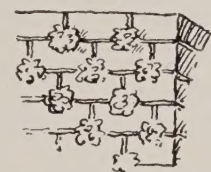
BERRIES may be planted as hedges, but sprawly kinds like blackberries (Boysen, Young, and Logan) are better trained on trellises. Their dense growth covers the trellis and fruits appear on the surface.



STRAWBERRIES.



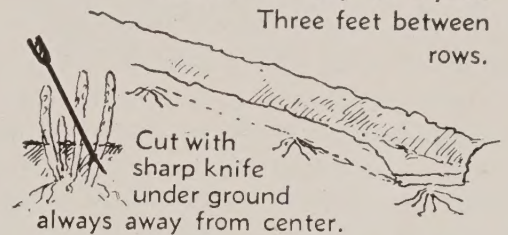
Space 1 ft. apart each way. For the home garden 3 feet is a good width of bed—any length—for wider beds allow walk at 3-foot intervals.



Strawberries used as cover on dry wall. Plant in intersections of blocks in good soil. Face sun.

ASPARAGUS. Plant in furrows or trenches. Roots should be 6 to 8 in. deep, but when planted cover only 2 to 3 in. and later in season fill in the remainder. Cut very lightly second season; full crop third year.

Three feet between rows.



PLANTING SUGGESTIONS

We are interested in your success with every tree or plant we send out; we exercise the greatest care to place every item in the hands of our customers in the best possible condition, and in order to furnish some precautions and provide for complete satisfaction, we give a few hints on such points as are most essential.

TIME TO PLANT—Trees and plants usually become dormant about the 1st of November, and may be planted throughout the fall, winter and spring months. Fall and winter planting is preferred for the reason that the roots become established during the winter months, and we are ready to make a vigorous growth when warm weather begins. However, excellent results are obtained with early spring planting.

CARE OF TREES ON ARRIVAL—Unless you are prepared to plant them immediately upon arrival, dig a trench large enough to accommodate the roots; cut the bottom string, and spread the roots carefully, firming the soil about them. **DO NOT PERMIT THE ROOTS TO DRY OUT OR FREEZE.**

PREPARING TREES FOR PLANTING—Don't fail to cut the top back (see illustration on page 10). This is necessary in order to balance the top with the loss of roots which always takes place when a tree is dug from the nursery. Trim each root back about one-half inch or so with a sharp knife, and cut off all broken or bruised roots.

PLANTING—Dig the hole larger than is necessary to admit all the roots in their natural position; then having the tree pruned as directed, hold it in an upright position, and shovel the soil, carefully putting the finest and best dirt from the surface in among the roots, bringing every root in contact with the soil, firming gently with the foot. The tree should be planted about the same depth it was in the nursery row; this may be determined by the change of color in the bark.

Commercial and natural fertilizers are valuable when properly used. Do not let strong fertilizers come in direct contact with the bare roots.

SUBSTITUTION: Please state when ordering an assortment whether substitution will be allowed, as we feel at liberty, when no instructions accompany the order, to use similar or better varieties when we are out of the kinds named. We never substitute on large orders for commercial planting without consulting the customer.

GUARANTEE: We warrant our stock to be true to name and will replace free of charge or refund purchase price, should any prove untrue to label. It is, however, understood between the purchaser and ourselves that in no case will we be held liable for a greater sum than the original price paid for the trees that prove untrue.

FRUIT TREES

We all realize the importance now of a few fruit trees about the place—their healthful properties, the added enjoyment of fruits properly ripened on the trees. Also some of our tastiest varieties are practically unobtainable in the markets.



PEARS

PRICES: Please refer to condensed price list enclosed.

MAKE MORE PROFITS WITH CARLTON PEARS

The pear thrives over a wide range—being able to stand more summer heat than the apple. The French pear root also withstands heavy wet soils much better than most fruits. The popular Bartlett rules supreme as a summer pear, but some of our fall and winter varieties are even finer in quality and flavor, and all lovers of fine pears should include some of these in their home gardens. Unlike most other fruits, the pear develops much better quality when ripened off the tree, and the fruit should be picked before it begins to soften.

Special Note: The New CANNERY RULING eliminates many of the short necked strains of Bartletts. Plant our new strain of Bartlett which easily qualifies in length and diameter.

Best Shipping Sorts: Bartlett, Bosc, Comice, Anjou, Winter Nellis.

Cannery Sort: Bartlett.

SUMMER VARIETIES

BARTLETT—A well-known favorite for eating fresh or canning. Large size, buttery, juicy and high flavored. August to September. See colored illustration.

AUTUMN AND WINTER VARIETIES

BEURRE D'ANJOU—A fine pear; rather large; flesh yellowish white, rich and vinous flavored. Tree good grower and productive. October and November.

BEURRE BOSC—Large, deep yellow, russet colored and long neck. Half melting, juicy, delicious with pleasant odor. Good shipper. September.

DOYENNE DU COMICE—Skin rich yellow at maturity, often lightly shaded with crimson. Flesh white, fine grained and melting, sweet and rich. Very good. October to November.

GORHAM—Large size, golden yellow when ripe, resembles Bartlett, ripens about two weeks later; fine flavored and firm texture.

FLEMISH BEAUTY—Large fruit; pale yellow, becoming reddish brown at maturity on the sunny side. Flesh yellowish white and juicy. Excellent for canning. Late September.

SECKEL—Often called the Sugar Pear, due to the rich sweet flavor. Small size, juicy and melting. One of the finest for spiced pickles, nothing as fine for this purpose. October.

WINTER NELIS—Tree hardy and thrifty. A delicious winter pear of medium size; flesh yellowish white, very juicy when ripe. One of the very finest for eating fresh. December to February.

WINTER BARLETT—Fruit large, closely resembling the famous Bartlett in shape and appearance but ripening considerably later. Flavor almost identical with the Bartlett.



BARTLETT PEAR

APPLES

PRICES: Please refer to condensed price list enclosed.

PROVEN OLD FAVORITES AND NEW

Our stock includes the best of the proven old favorites as well as the dependable newer varieties, covering a range of seasons and uses to meet all requirements.

The following profitable new varieties of merit should be planted by commercial planters desiring the best: Bright Red Rome, Solid Red Delicious, Yellow Delicious, Red Gravenstein, Red Spy, and Yellow Transparent. These are money makers. Order today.

Apples in this catalog are classified according to their seasons of maturity or use, such as "Summer", "Fall" and "Winter".

SUMMER VARIETIES

YELLOW TRANSPARENT—Earliest summer apple; always in demand for sauce or pies. Skin golden yellow; flesh white, fine grained, juicy, crisp, tender and sub-acid.

GRAVENSTEIN—An old-time favorite cooking apple in any form, especially fine for pies; crisp and juicy. Hardy and bears young.

RED JUNE—Always a favorite variety. Skin attractive red; flesh juicy, somewhat tart flavored. Hardy and productive.

RED GRAVENSTEIN—Bright red, juicy flesh, excellent flavor, good shipper and desirable as a commercial sort.

GOLDEN SWEET—Large yellow, early sweet apple, good bearer.

FALL VARIETIES

KING—Largest size, oblate, yellowish grounded, striped and covered with bright red. Fragrant juicy smelling. Flesh very crisp, tender, rich, fine flavor.

YELLOW BELLEFLOWER—Oblong ribbed fruits. Yellow skin touched with green and blushed pink. Cooking variety.

GRIMES GOLDEN—Flesh crisp, juicy and sub-acid. Very fine for cooking in all forms. Good keeper.

WINTER VARIETIES

BRIGHT RED ROME—A magnificent "double red" Rome Beauty; very early bearer, excellent shipper; a sure cropper.

DELICIOUS—This is the original Delicious and all that is claimed for it. It is a thrifty grower, hardy and prolific bearer. Highly flavored and excellent quality and a good keeper.



RED DELICIOUS

RED DELICIOUS—Large brilliant red, flavored, sweet, lightly touched with acid. Flesh fine grained, crisp and juicy. Preferred for eating. Good keeping qualities.

YELLOW DELICIOUS—A wonderful apple; an early bearer of beautiful yellow apples; good shipper.

NORTHERN SPY—A fine, large striped red, tender, mild, juicy apple, excellent eating or cooking. Keeps well up to June. Strong growing trees.

RED SPY—New, from New York Experiment station; typical Spy except in color; solid bright red; very hardy and productive.

ROME BEAUTY—Large, yellow and bright red. Flesh yellowish, tender, juicy, sub-acid. Good bearer, excellent cooking apple.

YELLOW NEWTOWN PIPPIN—This stands as high as any apple; a market and cooking variety. One of the best keepers known. Flesh rich, juicy and crisp.

SPITZENBERG—Medium to large, deep red, spicy, crisp flavor, an old favorite, good cooking and eating. Fine keeper.

JONATHAN—Red and yellow, juicy, rich flavor, tender flesh. Very productive. Good commercial apple. Fine eating.

WINTER BANANA—Large, clear waxy yellow with blush, fine tart flavor, good cooking and eating, crisp.

WINESAP—One of the standard commercial varieties due to its excellent keeping qualities. Dark red skin; juicy, sub-acid flavored flesh.



A FOUR-YEAR-OLD APPLE TREE SHOWING GROWTH AND HEAVY BEARING QUALITY OF CARLTON TREES

CRAB APPLES

PRICES: Please refer to condensed price list enclosed.

HYSLOP—September to October. Fruit medium; yellow with shadings crimson maroon; flesh fine, firm, yellow, astringent; bears abundantly. Ornamental. One of the most desirable sorts for culinary purposes.

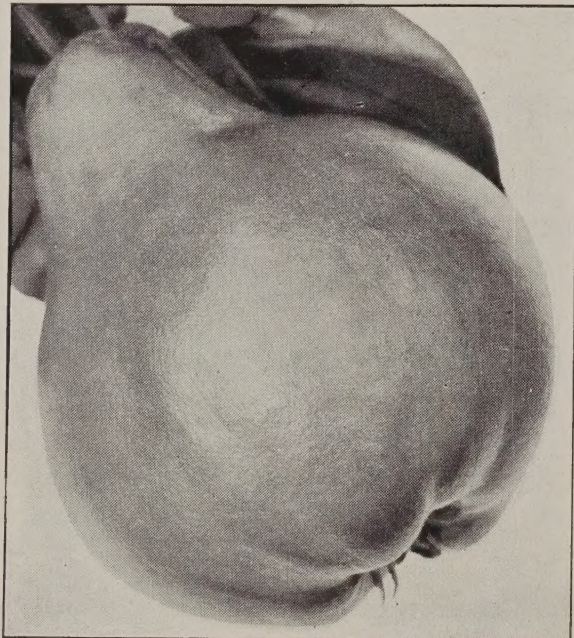
RED SIBERIAN—An inch in diameter; clusters; bears young and abundantly. August to September.

WHITNEY—August. Fruit large; yellow, striped with red and covered with red on sunny side; flesh yellow, very juicy and fine grained; flavor rich and almost sweet.

QUINCES

PRICES: Please refer to condensed price list enclosed.

PINEAPPLE—Flavor is suggestive of pineapple; fruit resembles Orange quince; making superior jelly; can be eaten raw, has a most delicious flavor, not equaled by any other quince.



QUINCE

PRUNES

PRICES: Please refer to condensed price list enclosed.

STANDARD COMMERCIAL DRYING SORTS—

Italian, Coates 14-18, Date, Improved French, Burton.

The Budwood for our prune trees is selected from the finest and best strains on the Pacific Slope.

COATES 14-18; DATE PRUNE—Sweeter, larger than French; fine for drying. Reddish purple, juicy.

HUNGARIAN—Largest size, beautiful bright red, one of the best for marketing; not good for drying. September.

ITALIAN (Fellenberg)—Medium to large size, oval, dark purple; flesh juicy, sweet and delicious; a standard drying and shipping variety. September.

BURTON—A new prune which is one of the largest and finest drying prunes. Rich violet-purple in color, with golden yellow flesh and small pit. A consistent and regular bearer. September.

SUGAR—Early August. Drying and fresh shipping. The earliest prune. Fruit medium to large, oval, dark purple. Flesh sweet, and of medium quality. A good pollenizer.

SPECIAL PROVEN MONEY MAKERS

For Commercial Shippers of Prunes

EARLY ITALIAN—Two weeks ahead of Italian. This is a proven profitable sort. Fruit identical in shape and color to common Italian, but slightly larger size. Transcontinental shipper.



PLUM

PLUMS

PRICES: Please refer to condensed price list enclosed.

BEAUTY—Early June. Shipping and home orchard. The earliest Japanese plum, important commercial variety. Fruit medium size, heart shaped, and crimson. The flavor is good. Tree productive; self-fertile.

DAMSON—August-September. Local market and home orchard. A tart plum very popular for culinary uses. Fruit small, roundish, dark purple with heavy bloom. Very productive.

DUARTE—Late July. Shipping. A blood-red plum of late introduction. Fruit large and elongated; skin a dull red. Flesh firm, deep red, and good quality.

GREENGAGE—A medium small greenish yellow plum of high quality. Midseason.

PEACH PLUM—Fruit large and earliest to ripen; regular, roundish; skin red, dotted with a blue bloom; flesh greenish yellow; tinged with red at maturity; a rich brisk flavor; the leading market variety. Middle of July.

SANTA ROSA—Large; purplish crimson; flesh yellow, mottled crimson; very good quality. Excellent for all purposes. Early July.

SATSUMA—A very large and well flavored plum with blood red flesh; skin blush red; very small pit; vigorous and productive. A well known variety much in demand for home canning. July.

YELLOW EGG—Ripens end of August. A large, handsome yellow plum. Good for home use or market. Golden yellow covered with thick bloom. Flesh firm, sweet and juicy.



PEACH PLUM



PRUNES

APRICOTS

PRICES: Please refer to condensed price list enclosed.

TILTON—Fruit large size, rich apricot color, flavor of the highest quality. Bears immense crops, either for canning or drying.

PEACH APRICOT—An extremely early, very large, handsome color, firm, rich and highly flavored. Shipping sort.

WENATCHEE MOORPARK—One of the largest size apricots. Color deep apricot with brownish red when ripened in the sun. Flesh firm, juicy and parting from the pit, pleasant sweet flavor.

MORMON (or Chinese Apricot)—Hardest of all apricots. The fruit is large size with a firm, fine grained texture, exceptionally sweet flavor and retains its rich apricot color when canned.



APRICOTS

PEACHES

PRICES: Please refer to condensed price list enclosed.



PEACHES

PLANT PEACHES FOR QUICKER PROFITS

All peaches listed are Freestones unless the word cling follows the name.

Best commercial peach sorts for the Northwest and Pacific Coast. All Freestones.

Improved Early Elberta, J. H. Hale, Rio Oso Gem, Rochester, Elberta, Golden Jubilee, and Hale Haven. "These are money makers."

COMMERCIAL SORTS IN RIPENING ORDER

MAYFLOWER—One of the earliest peaches. Medium sized, creamy white fruits, mottled with dark red; firm, white, juicy flesh.

HALES EARLY—One of the very best early white peaches. Skin greenish, splashed with red. Flesh white, juicy and sweet.

TRIUMPH—An extra early yellow fleshed peach. Skin very tender; juicy and sweet. Freestone.

GOLDEN JUBILEE—The wonderful new yellow freestone ripening a week to 10 days ahead of Rochester, making it a highly profitable sort of excellent quality. Is firm, rich in sugar and delightfully fragrant.

ROCHESTER—Has the habits and characteristics of the Crawford, but fully two weeks earlier. Yellow, freestone, good size, very sweet and fine flavor. Requires only half the usual amount of sugar for canning.

IMPROVED ROCHESTER—Yellow freestone, an especially fine type of the Rochester.

SLAPPY—Fruit yellow, good keeper; excellent flavor, fine grained, rich. Hardy early yellow peach. Excellent quality.

CHAMPION—Best of white freestone varieties. Skin creamy-white with red flesh. Extremely hardy and of uniform good quality.

CRAWFORD'S EARLY—Has all characteristics that gratify taste. Color, rich red splashed and mottled with darker red and golden yellow. Flesh is beautiful and perfectly free from stone. Matures in mid-season. Vigorous and productive.

HALE HAVEN—A wonderful new, extremely hardy shipping peach of recent introduction. Ripening at the right time, between Rochester and Improved Elberta. An immense golden yellow peach with a red cheek and a strong protective skin. This fine grained, firm, rich, golden fleshed freestone bears very heavy crops at an early age. Very profitable. An improved South Haven.

IMPROVED EARLY ELBERTA—This peach is the "Queen" of all canning peaches, and no doubt the biggest selling peach on the market. Fruit is a beautiful golden yellow, blending into a glorious deep pink on the sunny side; a strong protecting skin; exceptionally heavy bearer and a wonderful pollenizer for the J. H. Hale. Ripens about two weeks earlier than Elberta. A truly super-quality canning peach.

IMP. EARLY MUIR—Flesh clear yellow to pit, tender, sweet and mild. Excellent for canning. Ripens just before J. H. Hale.

J. H. HALE—Peach growers have demonstrated during the past several years that this is a profitable variety. Fruit is of largest size, highly colored; flesh is yellow, exceedingly firm and yet tender when eaten; flavor is unexcelled. Fruit ships exceedingly well; remains on the tree in a firm condition for a longer time than any other freestone. **The true type J. H. Hale.**

ELBERTA—Large yellow, with red cheek; flesh yellow, firm, juicy, of high quality. Exceedingly prolific. Leading market variety.



RIO OSO GEM PEACH

RIO OSO GEM PEACH
 (U. S. Plant Patent No. 84)
 Add 10c per Tree

A splendid new peach that ripens during the period when there is no other peach on the market.

Rio Oso Gem ripens ten days to two weeks after J. H. Hale. Has extreme large size of J. H. Hale, is more highly colored, finer grained in texture, firmer and of better quality than J. H. Hale.

MUIR LATE—Drying. Fruit large to very large. Skin yellow, easily peeled. Flesh color yellow to pit, tender, sweet and mild. A good bearer; resistant to Curl leaf.

INDIAN BLOOD—Home use. Deep red flesh. Popular for pickling and other culinary uses.

TUSCAN—Cling, commercial canning, shipping, and home orchard. Fruit of good size and attractive. Flesh yellow, with some red at pit. Flavor good.

LATE CRAWFORD—Shipping, drying, and home orchard. One of our oldest varieties, and still popular as a home orchard sort. A large yellow freestone of excellent quality.

ORANGE CLING—Home canning and shipping. Fruit very large; attractive. Flesh yellow and of good quality. Very productive.

SALWAY—Shipping, drying and home orchard. Fruit large. Skin greenish yellow with blush. Flesh yellow, of fairly good quality.

NECTARINES

PRICES: Please refer to condensed price list enclosed.

In growth, habit, treatment and soils precisely similar to the peach. Valuable for dessert; smooth skin.

BOSTON—Medium; deep yellow, with a bright blush and deep mottlings of red; flesh yellow without any red at the stone; sweet, though not rich, with a pleasant and peculiar flavor. Freestone.

QUETTA—(New, introduced by U. S. Department of Agriculture.) Yellow meated and highly colored. Very hardy.

STANWICK—For many years has been a leading nectarine. Extremely large fruit, the skin pale green, shaded purplish red; the flesh white and juicy, with a most delicious aromatic flavor.

ILLUSTRATED PLANTING INSTRUCTIONS SENT WITH EVERY ORDER
YOU CAN PLANT OUR STOCK WITH SAFETY, ORDER TODAY

TREE PROTECTORS

We recommend the use of Tree Protectors for young trees. Filbert and Walnut trees in particular should be protected from the sun rays the first year or two, to prevent sunburn. Protectors are your best insurance against this, the most prevalent of all serious injuries to young trees.

Protection Against Sunburn, Rabbits, Squirrels, Scraped Bark.

Prices: (FREIGHT PAID)	Per 1000	Per 100
15 inch	\$17.50	\$2.50
18 inch	20.00	2.75
24 inch	25.00	3.00



MONTMORENCY CHERRY

Sour Cherries

PRICES: Please refer to condensed price list enclosed.

SOUR CANNERY VARIETY—Montmorency Large. Our Montmorency Large buds are taken from the best proven block on the Coast and are highly recommended by one of the leading canneries. Plant this type of Montmorency Large for heavy yields and large profits.

EARLY RICHMOND (Kentish)—Medium size, bright red; flesh melting, juicy and rich acid flavor. Last of June.

ENGLISH MORELLO—Medium to large; blackish red, rich, acid, juicy and good.

LATE DUKE—Fruit large, roundish, rich, dark red, sub-acid. Ripens last of July.

MAY DUKE—One of the best hardy cherries; medium size, dark red, melting, rich and juicy. First of June.

MONTMORENCY—Large. Tree very hardy and immense bearer, fruiting young; regular bearer of fine crops; fruit large, fine flavor, shining red, valuable everywhere.

MAZZARD CHERRY SEEDLINGS

	10	100
3 to 4 ft.....	40c	30c
4 to 6 ft.....	50c	40c

Sweet Cherries

PRICES: Please refer to condensed price list enclosed.

BING—Almost as large again as the Black Republican; flesh very solid, flavor of the highest quality; tree thrifty, upright grower, very hardy and productive; a fine shipping and market variety. First of July.

BLACK REPUBLICAN—Fruit dark color; rich, solid and an excellent keeper. Middle of July. Pollenizer.

BLACK TARTARIAN—Very large, purplish black, half tender; flavor mild and pleasant. Tree vigorous, immense bearer. Ripe last of June. Pollenizer.

DEACON—Similar to Black Tartarian in color and size, but superior in texture and shipping qualities. One of the most satisfactory for pollenizing.

LAMBERT—Size very large; form roundish, heart-shaped; color dark purplish red, meaty and of fine texture; semi-cling, small seed; flavor sweet or very mild sub-acid, aromatic, rich. Quality very good and an excellent shipper.

ROYAL ANN (Napoleon)—Fruit large; light yellow with red cheek, very rich, solid, excellent keeper. The leading commercial canning cherry.



BING CHERRY

CHERRIES

SPECIAL NOTE TO COMMERCIAL ORCHARDISTS—Many beautiful cherry orchards at 6 to 8 years old, quickly commence to die back and carry a lot of unhealthy wood structure, finally dying out completely. Avoid this terrible loss of time and money by buying your commercial cherry orchard from reliable nurseryman. We offer the finest of stock grown from bud selected sorts direct from the very finest cherry orchards in the west. We grow our cherry trees on whole roots of **true mazzard stock**. Many inferior cherry trees are offered annually by unreliable nurserymen. Buy only the best. Ours will stand the test of time.

In planting a cherry orchard care should be taken not to plant trees too close together; select a dry soil for the cherry, as a rule, although it is so hardy a tree that it will thrive in a great variety of soil. Use same care in planting as other trees.

Orchardists are resorting more and more to the planting of varieties of cherries that are strong pollenizers. Experience seems to demonstrate that such varieties as Black Tartarian and Black Republican are the best varieties to use for this purpose. Usually about one in every nine trees has proven to be the right proportion to use of these pollenizers.

Special Note to Commercial Planters—Our cherry trees are grown from heaviest consistent producing orchards. Pollenizers offered are taken from same proven blocks of Royal Ann, Bing, and Lambert.

Commercial Sorts—Bing, Lambert, and Royal Ann.

Pollenizers—Black Republican, Deacon, and Black Tartarian.

WE PAY

ALL SHIPPING CHARGES

Make this additional saving by ordering
CARLTON Nursery Stock.



Figure 1
A 4 to 6 ft. Peach Tree.
Ready for delivery.

Figure 2
A 4 to 6 ft. Peach Tree.
Trimmed ready to plant.

ONLY ONE QUALITY — THE BEST

We offer no untried varieties, each has a record of proven production.



FILBERTS

TWO-YEAR NURSERY GROWN TRANSPLANTS

	Each	10 to 50
3 to 4 ft.....	\$ 1.00	\$.75
4 to 6 ft.....	1.25	1.00

Orchardists—Please write for special quantity prices.

BARCELONA—Most widely planted commercial variety. A large, round nut, fully self husking, rich in flavor, kernel uniform in size, clean of pellicle and very prolific when pollenized with about 15 per cent DuChilly and Daviana, alternated by setting every third tree in every third row to a pollenizer. Tree a strong, upright grower.

DU CHILLY—Pollenizer. A large, long nut, about 50 per cent self husking and balance readily husked by machinery or by hand, finest quality demanding a premium over Barcelona, often used as a main commercial crop.

DAVIANA—Pollenizer. A long, striped nut of the DuChilly type, excellent pollenizer for Barcelona and DuChilly; not planted commercially, quality good and tree a very strong, upright grower.

NOTE—We can supply one-year **Tip-layer Filbert trees for commercial plantings.** Please write for special prices.

VROOMAN FRANQUETTE GRAFTED WALNUTS On California Black Root

	Each
3 to 4 ft.....	\$1.50
4 to 6 ft.....	2.00
6 to 8 ft.....	2.50
8 to 10 ft.....	3.00

Special prices on commercial orders.

The Vrooman Franquette has proven to be the best yielder, highest quality, and most hardy tree for the Northwest, blooming late enough to insure regular crops of finely filled nuts. This combination cannot be found in many sorts.

SPECIAL NOTE—We offer an exclusive type of grafted Vrooman Franquette tree grown from a record producing strain. Stock is high grafted and root system is highly developed.

SEEDLING CHESTNUTS

(Bear heavy crops.) 1 to 10 11 to 25

3 to 4 ft.....	\$1.00	\$.75
4 to 6 ft.....	1.25	1.00

AMERICAN SWEET—Makes a handsome shade tree, full medium size, very sweet and well flavored.

ALMONDS

	Each	10 to 50
3 to 4 ft.....	\$.90	\$.80
4 to 6 ft.....	1.00	.90

Plant two varieties for pollenization.

DRAKE'S SEEDLING—A well known variety prized for its regular and heavy producing qualities. Pollenizer. Nut medium size, roundish, shell medium soft, with good size kernel.

I.X.L.—One of the standard commercial varieties. Hulls easily. Nuts are large and symmetrical. Shell soft, smooth, kernel large and well filled, tree a strong grower.

NONPAREIL—Most popular thin shell variety. Kernel long and narrow and of excellent quality. Tree is a vigorous grower, producing heavy crops of large, well-filled nuts.

TEXAS PROLIFIC—An excellent type, good producer, pollenizer, nuts medium to large. Good flavor.

GRAFTED PERSIMMONS

	Each
3 to 4 ft.....	\$1.75
4 to 6 ft.....	2.00

HACHIYA—The large conical fruit is a beautiful vermilion color when ripe. Though astringent when green, the fully ripened fruit is very mild.

FIGS—OREGON GROWN and ACCLIMATED Each
Two year old.....\$1.50
One year old..... 1.25

LATTARULA—A sweet white flesh fig of excellent flavor and quality. White skin. Bears first year. Ripens two crops a season. First crop first part of August, second crop October. Used for eating fresh or preserves. Has proven very satisfactory for the Northwest. For best crops do not prune.

BROWN TURKEY—The fruits are very large and long, a rich purplish-brown in color, becoming deeper purple as they mature, with rich strawberry-red flesh, fine grained, sweet and juicy. It seems to bear equally well, whether it be directly on the coast or in the interior or desert valleys. Larger and finer figs will be produced if the trees are heavily pruned back in the winter.

FIGS—CALIFORNIA GROWN

	Each
3 to 4 ft.....	\$.75
4 to 6 ft.....	1.00

VARIETIES—Kadota, Black Mission and White Adriatic.

SPECIAL SORTS

Prices:	Each	10
2 Yr No. 1.....	75c	50c

CACO—The new red grape. Of exceptional merit. Earlier than Concord. Wine-red, compact bunch, good size, hardy, thrifty grower. Good arbor variety.

FREDONIA—This new blue-black grape was originated and thoroughly tested by the New York Experiment Station. Ripens 15 days before Concord. Very large berries on compact bunches; spicy, sweet flavor and fragrant. Vines are hardy, thrifty, and heavy producers.

GOLDEN MUSCAT—Choicest golden amber-white grape for your fancy desserts and wines. Large, somewhat oblong berries in large, compact bunches. Rich, sweet, mellow, aromatic Muscat flavor. Wonderful keeper, shipper and producer.

ISLAND BELLE—Ripens middle of August to September. Keeps sound and perfect both on and off the vine for weeks, after other grapes are gone. Both clusters and berries are large, glossy black with attractive blue bloom; sweet and juicy. Stands at the head of early black grapes for quality.

EUROPEAN VARIETIES

Prices: European Sorts	Each	10
Heavy 1 Yr. No. 1.....	50	40c

MUSCAT OF ALEXANDER—Large, long, somewhat loose bunch; berries elongated, slightly oval, amber color when ripe; flesh firm and brittle, sweet, rich, sugary. Used largely for raisins. September.

THOMPSON SEEDLES—The best known seedless grape; widely planted for raisins, market and home fruit as well. Large bunch of rather small, amber-yellow berries; sweet and mild.

TOKAY—Very large bunch and berry, thick skin, pale red covered with bloom; firm, sweet flesh. An old standard table variety. October.

SWEETWATER (White)—Medium size, sweet, rich flavor.



CACO GRAPE

GRAPES

ALWAYS BEAR

Have Plenty of Grape Jelly, Jam and Juice

Several tons of graps are harvested to the acre. Planting them 8 feet by 8 feet requires 680 plants to the acre.

HARDY AMERICAN GRAPES

Prices:	Each	10
2 Yr. No. 1.....	50c	40c

Special prices on large orders.

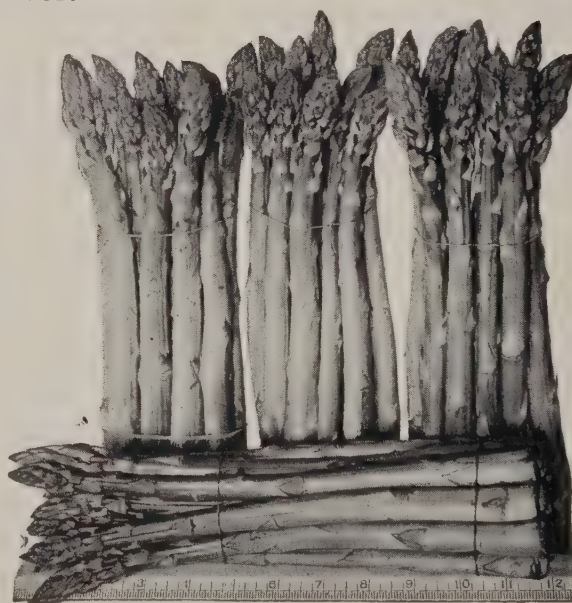
CAMPBELL'S EARLY—Handsome black berries with purple bloom; rich, keeps very well.

CONCORD—Fine black variety; juicy and sweet, splendid flavor; reliable and productive. One of the most popular and adaptable varieties. The standard grape in many sections.

WORDEN—Seedling of the Concord, which it greatly resembles in appearance and flavor, but the berries are larger. The fruit is better flavored and ripens earlier than the Concord.

NIAGARA—Very large, round, golden white grape of musky flavor, grown in large, compact bunches. Ripens same season as Concord and is often called the "White Concord". Very hardy and prolific.

AGAWAM—Large bunch, red berries, tender and juicy; ripens early. Good bearer. A very fine table grape.



ASPARAGUS

Prices:	10	25	100
2 Year No. 1.....	\$.60	\$1.00	\$2.50

MARY WASHINGTON—Rust resistant. The shoots are large, very vigorous, straight and of superb quality. Dark green. A good variety for both the home gardener and commercial grower.



STRAWBERRIES

STRAWBERRIES

Prices 25 100
 \$1.00 \$2.50

EARLY VARIETIES—Dorsett, Gold Dollar.

MID-SEASON VARIETIES—Improved Oregon, Banner, Marshall.

LATE VARIETIES—Red Heart, Corvallis.

EVERBEARING STRAWBERRIES

Prices 25 100
 \$1.25 \$3.50

Mastodon, Gem.

ROCKHILL No. 26 EVERBEARING

Fruits young, prolific. Do not make runners.

Prices 25
 \$2.00

RHUBARB

Prices: Each 25c; 10 for \$2.00.

The following varieties are best for the West Coast:

RIVERSIDE GIANT—Extra large, fine for canning.

CHERRY—This variety has large bright red stalks which are of splendid quality.

STRAWBERRY—This variety produces great numbers of stalks. It is the strongest grower and is more hardy. The stalks are a lighter pink.

BLUEBERRIES

3 Yr. 18 to 24 inch..... Each 10
 \$1.25 \$1.10

Special Prices on large orders.

RANCOCAS—Early, large berries, strong grower, good commercial berry.

RUBEL—Midseason, berries medium size, flavor good, produces enormous crops.

GROVER—Late, attractive bush, berries large, delicious.

UN-NAMED VARIETIES—10c per plant less.
 (Fruiting over long season, are very desirable.)

RASPBERRIES

A GOOD IN-BETWEEN CROP, EASY TO GROW FOR HOME OR MARKET

(Finest of Clean, Healthy Plants, Guaranteed)

No. 1 Plants Each 10
 \$.20 \$1.50

RED:

NEWBURGH—New, the finest red raspberry. Its berries are large, heavy yielder, good shipper, and has rugged upright canes. Similar, but decidedly better than Latham.

WASHINGTON—New, produces a very heavy crop of berries that are slightly larger than Cuthbert, firmer and brighter color. Disease resistant.

CUTHBERT—Very hardy, medium to large, firm and of excellent flavor, good shipper, at present the leading main crop raspberry.

ST. REGIS—Medium size, firm bright red berries. Long ripening season. Excellent shipping quality.

TAYLOR—Introduced by the New York Experimental Station. Fruit very large. Color bright attractive red. Long conical-shaped. Flavor sub-acid, quality good. Has thick flesh, small cavity, very firm, will not crumble, wonderful canning.

BLACK:

MUNGER—Berries are large, attractive, firm and of the highest quality; rich, sweet and produced in abundance. Bush is hardy and vigorous grower.

HORSERADISH ROOTS

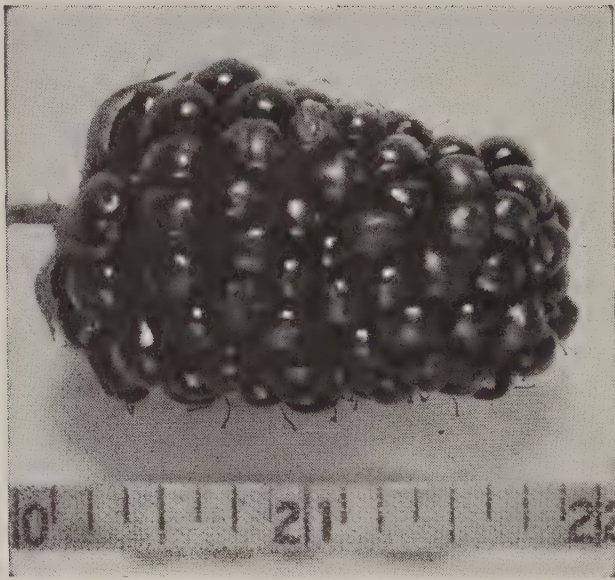
Horseradish thrives everywhere.

Prices: Each 25c; 10 for \$2.00.

GOOSEBERRY

Heavy No. 1 Plants Each 10
 \$.35 \$3.00

OREGON CHAMPION—Berries medium, round, smooth, greenish-white with thin transparent skin; good quality and ripens early; bush vigorous and very free from mildew.



BOYSENBERRY

BOYSENBERRY

	Each	10
Heavy No. 1 Plants	\$.35	\$3.00

An immense new berry produced by crossing blackberries, raspberries, and loganberries. The flavor is a very pleasing blend of these varieties. It has few and soft seeds. The Boysenberry consistently produces heavy crops, bears young, and the fruiting season lasts two months. The vines are most hardy, drought resistant, and make a strong vigorous growth.

THORNLESS BOYSENBERRY

	Each	10
1 Yr. No. 1 Plants	\$.25	\$2.00

This thornless strain has retained all the good characteristics of its parent, including its rugged, thrifty growth and hardiness. You can handle these canes with your bare hands and enjoy picking the large attractive fruits.

YOUNGBERRY

	Each	10
Heavy No. 1 Plants	\$.35	\$3.00

The fruit is very large and very juicy, with a rich blended flavor that is pleasing to nearly everyone. The color so very dark red that it is nearly black and the seeds are few in number and soft. The vines are vigorous.

ACME THORNLESS YOUNGBERRY

(Plant Patent No. 4)

	Each	10
1 Yr. No. 1 Plants	\$.25	\$2.00

The **ACME THORNLESS** is superior to the parent thorny type only to the extent that the hard punishing and annoying thorns are not present. In other respects there is little difference. Berries ripen a few days earlier.

THORNLESS LOGANBERRY

(Plant Patent No. 82)

	Each	10
1 Yr. No. 1 Plants	\$.25	\$2.00

This new berry has proven far more productive and the berries are larger than the old thorny type of loganberry. A delightful, highly flavored berry of dark red color. The canes are larger and entirely thornless.

NECTARBERRY

	Each	10
1 Yr. No. 1 Plants	\$.35	\$3.00

Richest flavor of all. Heavier yielding over a long period. Fruits average even larger than Boysenberries.

Genuine Nectarberry plants are not plentiful—yet our prices are very reasonable for a new variety with so many good qualities.

LOGANBERRY

	Each	10
Heavy No. 1 Plants	\$.35	\$3.00

The fruit is large, long, an attractive red color, and although it is a little sour it is highly prized by a very great many people for jams and jellies and for mixing with raspberries and other berries in jams and preserves. The vines are trailing and have to be grown on trellis.

CURRENT

	Each	10
Heavy No. 1 Plants	\$.35	\$3.00

PERFECTION—Bright red. It is one of the most productive currants. Rich, mild, sub-acid flavor and having plenty of pulp with few seeds.

CHERRY—The largest of all red currants; berries sometimes more than one-half inch in diameter; bunches short; plant very vigorous and productive.

FAY'S PROLIFIC—Large bunches, excellent quality of red berries; very productive.



CURRENTS

FLOWERING SHRUBS



SPIREA VAN HOUTTEI

FLOWERING SHRUBS give the finishing touch so much required by small and large home-grounds. When properly arranged, shrubs will soften the lines of the foundation, will provide an effective border or screen, will cover the edges of walls and screen objectionable views. Shrubs may also be used for covering slopes and for dividing the landscape into small sections, and for bordering the outdoor living-room of small homes. A selection of varieties will give a succession of flowers from spring until late autumn and after the foliage has fallen the brilliant berries and branches add color and cheer to the winter landscape.

Prices: Strong No. 1 Plants—

Each 85c; 3 for \$2.50; 10 for \$7.50

ALTHEA (Rose of Sharon)

Bright glossy leaves; flowers similar to a rose. Hardy summer and fall blooming shrub. Double white, double red, and single mixed.

BARBERRY

Japanese Thunbergi—An excellent group plant or for hedging. Foliage turns to a bright crimson before falling. Red berries.

Thunbergi Atropurpurea—Same as above except the foliage is red at all times.



BUDDLEIA (BUTTERFLY BUSH)

BUTTERFLY BUSH (Buddleia)

Magnifica—Rapid growing, semi-evergreen. Flowers on long fragrant spikes are borne profusely from June to November. Strong plants.

Isle de France—New. Reddish purple.

Charming—Long sprays lavender-pink blooms.

Dubonnet—Dark wine, firm large spikes of large flowers.

Hartwigi—Very dark purple.

BEAUTY BUSH (Kolkwitzia)

In the spring, the graceful, arching branches of this fine shrub are completely covered with lovely pink flowers. The foliage itself is very attractive.

CORALBERRY

Symphoricarpus Vulgaris—A slender branched upright shrub for shady places. Fruit is purplish red and hangs on well into winter; flowers small, rose colored.

CRANBERRY BUSH (Viburnum Opulus)

Tall growing snowball, producing red berries during late summer and fall.

DEUTZIA

Rosea—White flowers tinged with pink on backs of petals, giving the plants a pink effect.

Gracilis—A dwarf compact form with clear white flowers.

Pride of Rochester—Tall growing, white flowers tinged rose on back.



HYDRANGEA P. G.



FRENCH BUDDED LILACS

HYDRANGEA

Otaksi—Profuse double blue blossoms. Low and slow growth. Heavy clumps. \$1.00 each.

Aborescens (Hills of Snow)—Showy flower heads from June to cold weather.

Paniculata Grandiflora—Large cone shaped flowers of white in August, changing to pink as the flowers ripen. \$1.00 each.

Tree Hydrangea—Same as above, but grown in tree form. 3-4 ft. \$1.50 each.

QUINCE

Japonica—A very fine old plant that should find a place in every garden. Red, pink, and variegated.

FORSYTHIA

All varieties are grown for their pretty bright yellow flowers very early in the spring, ahead of their leaves.

Fortunei—Upright heavy arching branches.

Suspensa—Slender trailing branches.

Intermedia Spectabilis—Largest, darkest flowers. Most profuse bloomer.

HONEYSUCKLE

Morrowi (Bush Honeysuckle)—An upright grower with pure white flowers.

Pink Tartarian—Similar to above but with pink flowers.

KERRIA

Japonica—Slender upright stems and branches. Double orange flowers in the early spring and continue intermittently throughout the summer.

PHILADELPHUS

Lemoinei—Rich foliage and large pure white fragrant flowers.

Virginalis—Semi-double flowers blooming very freely in spring and intermittently all summer.

FRENCH BUDDED LILACS

Prices: 15-18 in. 75c; 18-24 in. \$1.00.

The lilac is a well known hardy shrub; however, the newer Budded French varieties have richer color and more double blossoms of unusual fragrance.

Note: Plant the union of top and rootstock about four inches under the surface.

Alphonse Laval—Pyramidal clusters of double bluish-lilac flowers.

Belle de Nancy—Great panicles of double satiny rose blooms; white center.

Buffon—Single pink; large clusters. Fine cutting.

Charles Joly—Double purplish-red. Tall grower.

Lamark—Double purplish lilac.

Stadgartner de Rothpletz—Double deep purple.

SNOWBALL

Opulus Sterile—The old fashioned snowball that blooms in May.

Tomentosum Plicatum (Oriental Snowball)—Showy clusters of double white flowers. \$1.00 each.

SPIREA

Anthony Waterer—Crimson flowers blooming profusely all summer if spent flowers are kept cut away.

Thunbergi—A beautiful display of white flowers in the early spring ahead of the leaves. Soft feathery foliage.

Van Houtte—Upright, tall growing with flowers in white clusters.

TAMARIX

Africana—A beautiful shrub with small feathery foliage. Delicate pink flowers.

Hispidia—Bright pink flowers, June-July. Very hardy.

WEIGELIA

Rosea—Bright pink bell-shaped flowers.

Eva Rathke—Dwarf form with red flowers. Blooms continuously throughout the summer.



CYDONIA JAPONICA (JAPANESE FLOWERING QUINCE)

FLOWERING TREES

PURPLE-LEAVED FLOWERING PLUMS

Small growing, distinct ornamental trees used as specimens or grouped with other trees and shrubs in border or background. Their foliage produce beautiful tones of purple, very attractive where colored effects are desired. The varieties differ in pink, white, single and double blossoms.

Prices: 4-5 ft. 75c; 5-6 ft. \$1; 6-8 ft. branched \$1.50.

Bliriana—Upright growth with dark purple foliage. The blossoms appearing early in May, are deep pink, double and fragrant. The shape and size resembling the Flowering Almond blooms. This is one of the best varieties. Twelve to fifteen feet at maturity.

Pissardi—Beautiful purple foliage, retaining its color well through the season. It has attractive pale pink flowers in May. Edible fruit excellent for jelly. Fifteen to twenty feet at maturity.

Vesuvius (Burbank's Purple Leaf Plum)—Foliage larger and more reddish than *Prunus pissardi*. Flowers are slightly larger and later. A very brilliant decorative tree.

Thunder Cloud—This and the *Vesuvius* have the most beautiful foliage of any of the flowering plums. The leaves appear a rich red color and gradually become darker, turning to a very rich purple.

Triloba (Rose Tree of China)—The flowering plum blooms early in May before the leaves come out. The delightful double, quilled, bright pink flowers stud every twig and branchlet so heavily no wood is visible. Very handsome and should not be left out of any garden.

PURPLE FRINGE, or SMOKE TREE

A small tree or shrub, very much admired on account of its peculiar fringe or hair-like flowers, covering the whole surface of the bush in mid-summer.

Prices: 2-3 feet \$1.00; 3-4 feet \$1.50.



PAUL'S DOUBLE FLOWERING THORN

DOUBLE FLOWERING HAWTHORNE

Dense growth, attractive foliage, brilliant coloring in fall, with handsome decorative fruits and flowers.

Prices: 4-5 ft. branched \$1.00; 5-6 ft. branched \$1.25; 6-8 ft. branched \$1.50.

Paul's Double Flowering—Has wide spreading, irregular, spiny branches, the head about equaling the height in diameter. In May it is very decorative with an abundance of double carmine-red flowers, followed by red fruit.

Double Pink—Small tree. Early spring, pale pink, red fruit.

Carriers—Beautiful glossy foliage; large, bright red berries.



FLOWERING CRABAPPLE



FLOWERING PLUM (*Prunus Blirieana*)



DOUBLE PINK FLOWERING ALMOND



KWANZAN FLOWERING CHERRY

ROSE-FLOWERING CHERRIES

Among the flowering trees the rose-flowering cherry takes the lead. They vary in form and therefore may be adapted to many uses in landscape work. Some are vase-form, others pyramidal in growth, but most sorts have wide-spreading branches, vigorous in growth, and still others are rather dwarfish. Nearly all are tinted various shades of pink, and a few are white. Trees are hardy. While known and used in the Orient for hundreds of years, these valuable trees are rapidly becoming popular and gaining favor in the United States. Both upright and weeping growth.

Prices: 4-6 ft. branched, \$1.25; 6-8 ft. branched, \$1.50.

Kwanzan. Double, rose-pink. Handsomest of all the double flowering cherries. Blooms just after the middle of April (depending somewhat upon locality.) The tree is upright and spreading, and at maturity 25 to 30 feet high. Leaves and flowers appear simultaneously. The buds are red, and the fragrant, rich, rose-colored double blossoms are borne in clusters. Flowers are very large, up to 2 inches in diameter. A graceful and beautiful tree for the lawn or grounds; also adapted for planting in parking strips and along avenues.

Shirofugen—15 ft. Has the very largest flowers of any variety that we grow, deep pink in the bud and pale pink in the open flowers. It is almost impossible to describe the beauty of this tree when in full bloom.

Kofguen—Double deep pink, vigorous, upright and no great tendency to spread, adapting it to street planting. Best deep pink sort.

Mount Fuji—Pure white; remains attractive; calyx turning reddish with age. A bushy, small tree, hardy, extremely floriferous.

WEeping CHERRY

One of the finest weeping trees for lawns and small grounds. The branches are slender and when grafted on tall stems, fall gracefully to the ground. The flowers are rose-colored, appearing before the leaves.

No. 1 heads, about 6 feet tall, \$2.75.

Single Pink Weeping Cherry.

Double Pink Weeping Cherry.

FLOWERING CRAB (Malus)

Producing flower effects equal to those of more talked-of cherries. The crabs are hardy and add a charm of fragrant wildness to a planting.

They are extremely hardy and will thrive in positions and exposures which would be fatal to the more delicately constituted cherries. They also exhibit a greater variety in character of tree, a wider range of color in their blossoms, and in autumn are adorned with glittering clusters of fruit in shades of green, yellow, orange, scarlet, and crimson. No other flowering trees equal the flowering crabs in profusion of bloom, and among other good qualities, varieties may be selected which have a restricted growth or dwarf habit so that they will never become too large and clumsy.

Prices: 4-5 ft. branched \$1.00; 5-6 ft. branched \$1.25.

Atrosanguinea—In early May, every twig and branchlet of the Carmine Crab is covered with clusters of dark pink, almost crimson flowers. It is somewhat taller than other crabs and is a handsome lawn specimen. Ultimate height 15 feet or more.

Bechtel's—The flowers are a beautiful shade of pink, are large, very double and fragrant, resembling little roses. It blooms somewhat later than most varieties.

Dolgo—Hardy fiery red crab, desirable for culinary uses; bears young and abundantly. Good for ornamental purposes.

Eleyi—Attractive reddish foliage in spring changing to pink. Clustered single rose-pink flowers followed by showy red fruit.

Floribunda purpurea—In habit it resembles Floribunda. Its purple foliage and bark, single crimson flowers and fruit make it a distinct departure from the ordinary. The flowers and fruit are carried on long, pendulous stems and are produced in great abundance on mature trees. It is a strong grower, and when in bloom, its blossoms completely conceal the twigs and branches.

Hopa—A beautiful, upright growing tree with attractive foliage. Entirely covered with rose-colored flowers in April. Fruit red inside and out, hanging on until late autumn. Very hardy and free from disease. Planted extensively.

Niedzwetzkyana—A very interesting variety with purplish foliage which makes a very pleasing contrast when used with other flowering crabs or any other flowering trees or shrubs. Bears large edible fruit.

Parkmani—An irregular shaped little tree when young, Parkman's Crab assumes a most attractive picturesque habit as it grows older. The flowers are bright rosy red, double, and droop gracefully on threadlike pedicels. It is a gorgeous ornament to any planting, and has long been a favorite of the Japanese.

Scheideckeri—The flowers of Scheidecker's Crab are double, bright pink, last a long time, and the fruit, which is produced in great profusion, is waxy yellow. The tree has a regular pyramidal habit, about 15 feet high. Best and easiest to flower.

Spectabilis (Chinese Flowering Crab)—Growth decidedly erect and vase-like. Flowers double, fairly large and light pink, followed in autumn with beautiful red fruit.



FLOWERING PEACH

FLOWERING PEACHES

For an easily and quickly obtained mass of spring color, there is nothing to excel the Flowering Peaches. They will grow with the greatest ease anywhere and never fail to produce a great profusion of bloom. Not only are the trees a source of great admiration in the garden, but the trees enjoy having their branches cut for indoor use.

Price: 4-6 ft. branched, \$1.00.

Double Red—The same rich ruby-red as the earlier one but blooming three weeks later. Very large blooms.

Burbank—Large double pink flowers, late. Strong growing tree.

Appleblossom—Grows rapidly. The large double blossoms are soft, rich pink in color.

Bi-Color (Peppermint Stick)—As beautiful as it is curious. Name comes from the color of most of the flowers which are double white more or less marked with red stripes. The red may vary from a few narrow lines to heavy bars of red, while here and there will appear a solid red flower.

Hardy Climbing Vines and Creeping Plants

CLEMATIS

Jackmani—The giant purple Clematis, and favorite everywhere. 2-yr. plants, \$1.00.

Henryi—Large sized lustrous white flowers. 2-yr. plants, \$1.00.

Mad. Ed. Andre—Large velvety red flowers. 2-yr. plants, \$1.00.

Paniculata—Luxuriant grower, with fine foliage and an abundance of small, white, fragrant flowers. 2-yr. plants, 75c.

HONEYSUCKLE

Hall's Japan—Old-time favorite. White and yellow, fragrant flowers last nearly all summer; foliage almost evergreen. 2-yr. 75c.

Scarlet Trumpet—Handsome clusters of scarlet flowers. Hardy, vigorous climber. 2-yr. 75c.

BITTERSWEET

Favorite, with bright glossy foliage, bearing sprays of bright orange berries in the fall. 2-yr. plants, 75c.

DOUBLE FLOWERING ALMOND

Prices: 2-3 ft., 75c; 3-4 ft. \$1.00.

These well known bushy shrubs never fail to produce in early spring, before the leaves appear, a profusion of small, very double, pink or white, rose-like flowers that are closely set along the branches. Choice of pink or white.

PINK FLOWERING DOGWOOD

(Balled in earth.)

Pink flowering variety which is greatly in demand.

Prices: 2-3 feet \$2.50; 3-4 feet \$4.00.

HEDGE PLANTS

Can you imagine anything more beautiful and fascinating than a living fence?

BARBERRY

Thunbergi—An excellent barrier to 30-36 inches. Leaves turn a brilliant red in the fall. 15 to 18 in. 10 to 25 plants @ 35c ea.; 26 to 100 plants @ 30c ea.

Thunbergi Atropurpurea—Same as above except the leaves are red all summer. 10 to 25 plants @ 45c each; 26 to 100 plants @ 40c each.

BOXWOOD

Suffruticosa (True Dwarf)—Just the thing for formal gardens. No. 1 hedge grade. 10 to 25 plants @ 30c each; 25 to 100 @ 25c each.

LAUREL

English—Best for large hedge. 12-15 in. plants: 10 to 25 @ 35c each; 26 to 100 @ 30c each; 9-12 in. plants: 10 to 25 @ 25c each; 26 to 100 @ 20c each.

PRIVET

California—A rapid grower and makes a full compact hedge. Same price as English.

Lowdense—A new dwarf variety for hedges of about 24 inches. 9-12 in. plants: 10 to 25 plants @ 25c each; 26 to 100 @ 20c each.

English—One of the best. 18-24 in.: 10 to 25 plants @ 20c each; 26 to 100 plants @ 15c each.

Here is the biggest bargain in America on Quality Rose Bushes. Guaranteed to bloom this year, and under favorable growing conditions, within a few weeks.

SILVER LACE VINE

Beautiful, quick growing vine, with rich, glossy green foliage, and a mass of feathery white bloom. 2-yr. plants, 75c.

WISTARIA (Grafted)

Purple or White—The most magnificent of all vines. Lasts for generations, becoming more beautiful each year. 2-yr. plants, \$1.25 each.

IVY

Boston—Dainty, lovely vine with small overlapping leaves, forming a dense sheet of deep green, turning in the fall to bright scarlet. Clings tightly to any surface without support. 2-yr. plants, 75c.

English—The best for bank covering. 2-yr. plants, 75c.

VIRGINIA CREEPER

Dense, green foliage turns bronzy red in autumn. Clings to walls or any support. 2-yr. plants, 75c.

ROSES . . . Queen of Flowers



DAME EDITH HELEN

THE NEWER AND BETTER ROSES

POSTPAID PRICES:

	Each	Ten
2 yr. No. 1—Field grown	75c	\$7.00

ONE GRADE—THE BEST

AMI QUINARD—Long pointed, blackish garnet bud opening to a loose, semi-double fragrant bloom.

AUTUMN—A combination of deep burnt orange and pink, streaked with red.

BRAZIER—Beautiful pointed buds of burnt orange open to a dazzling flower of flame and scarlet.

BRIARCLIFF—Handsome flowers of bright rose-pink, shading lighter at outer petals. Fine for cutting.

CALEDONIA—Long, pointed buds open to double, high-centered, pure white flowers. Moderately fragrant.

CECIL WALTER—Extremely long bud, soft coral pink, flushed copper, overcast gold. One of the most beautiful roses in this color and the only one that is black spot resistant. It is very worth while.

CHRISTOPHER STONE—Scarlet crimson that does not blue and is vigorous. Beautifully waved petals, long pointed buds. A real sensation and the heaviest blooming red in existence.

CATALONIA—A new Spanish rose. The outer petals a bright vermilion red, shading to gold at base. Free blooming, good foliage.

CATHERINE KORDES—Large, long-pointed, blood-red buds, opening to a lasting glowing scarlet bloom with a shading of deep pink.

CONDESA DE SASTAGO—A brilliant bi-colored Spanish rose. Large cup-shaped flowers, with glowing scarlet inside of petals and intense bright yellow on the outside. Fragrant.

CYNTHIA—Immense, double flowers of dazzling scarlet shading to a deeper red as they develop; deliciously fragrant and long lasting when cut.

DAINTY BESS—Single-crikkled petals of apple blossom pink; dark stamens.

DAME EDITH HELEN—Pointed buds, opening slowly to large blooms of brilliant pink, which are fully double.

DUQUESA DE PENARANDA—In cool weather salmon apricot, in hot weather light salmon pink.

E. G. HILL—Long red buds of perfect form, opening to double high-centered flowers of dazzling scarlet.

EDITOR McFARLAND—Long pointed pink buds with a glow of amber and a paler edge. Excellent for cutting.

ETOILLE DE HOLLANDE—One of the most popular brilliant crimson-red roses. Beautiful oval buds; large double flowers.

GOLDEN RAPTURE—Beautifully formed flowers of pure yellow, which do not fade. A splendid variety for cutting and for bedding.

GLOWING CARMINE—A wonderful new rose well described by its name. A free bloomer.

HEINRICH WENDLAND—Large, long pointed buds and very large double full high-centered flowers of unfading nasturtium red. Reverse of the petals deep golden yellow.

HINRICH GAEDE—The richest mixed color today. Apricot-orange-scarlet. Glossy foliage. Very popular.

H. C. YOUNG—Well shaped bud, salmon pink blooms. Very vigorous. Glossy foliage. Undoubtedly one of the very best new roses.



MRS. P. S. DU PONT

ISABELLE—Largest single rose. Orange carmine to coral pink.

JOANNA HILL—A charming orange-yellow, vigorous growing, free blooming, fragrant rose.

K. A. VICTORIA—A favorite old white rose with shapely pointed buds. Exquisitely perfumed.

KAREN POULSEN (H. Poly.)—Large single scarlet-erimson. Very showy. Comes in huge trusses in the fall. One of the most popular red H. Polys.

KATHERINE PECHTOLD—Beautifully pointed buds and fairly full blooms with reflexed petals; soft coppery-orange flushed old gold.

LESLIE DUDLEY—Slender buds opening to perfectly formed flowers. A blend of coral-pink, yellow and salmon. A wonderful cut flower.

LORD LONSDALE—High centered buds, full blooms, lasting, rich yellow.

LUCIA ZULOGA—A beautiful bud and semi-double flower of deep brownish scarlet with a gold undertone. A color different from any other rose.

MAX KRAUSE—The long pointed bud is a reddish-orange, opening to a large flower of golden yellow with fine substance.

McGREY'S IVORY—Long pointed buds opening to a perfectly formed white flower.

McGREY'S PEACH—A beautiful yellow rose, splashed with pink.

McGREY'S YELLOW—Large, bright buttercup yellow flowers. Every bloom perfect.

MME. JOSEPH PERRAUD—Very long bud of coppery buff. Very vigorous. Of the same type as Countess Vandal, consequently will continue to be a heavy prize winner.

MME. CECILE BRUNNER—Polyanthus Rose—A dainty variety with small, double soft flesh-pink blooms blended into a golden base.

MME. JULES BOUCHE—A vigorous growing double white rose.



TALISMAN

MME. JULES GUERIN—An exceptionally large fragrant, well formed double flower. The long shapely bud when first expanding is golden yellow, passing to creamy yellow as it develops. Very vigorous and free flowering.

MRS. E. P. THOM—Perfectly formed buds of a rich deep lemon yellow. A grand fragrant garden rose.

MRS. P. S. DU PONT—Medium sized, long pointed buds of reddish-gold, opening to semi-double flowers of golden yellow.

MRS. SAM McGREY—Large double bloom of orange salmon, with a suffusion of gold. Strong healthy grower.

PERFUME—Large, fragrant flowers of brilliant flame red. Beautiful buds. Strong stems.

PICTURE—Well shaped buds and medium-sized fragrant, rose-pink flowers. Strong, vigorous plants almost constantly in flower.

PINK DAWN—Deep rose buds opening to lovely pink blooms tinted with orange at the base of the petals. Sweetly fragrant, full double.

PRES. H. HOOVER—A glorious rose with charming color combinations of cerise-pink, flame, scarlet and gold. A very thrifty bush.

ROUGE MALLERIN—Pointed buds of brilliant red open to blooms of glowing scarlet. Petals resemble pieces of rich velvet. Exquisitely perfumed.

SENORA GARI—Another new Spanish rose introduced by Pedro Dot. Large double deep orange to rich buff-apricot. Fragrant.

SIR HENRY SEGRAVE—Large, long, well-shaped buds and very high-centered double flowers of deep lemon yellow.

SISTER THERESE—Chrome-yellow perfectly formed buds tinged with carmine. The light yellow open blooms, spicily fragrant, with deeper tones of apricot and gold, are always beautiful.



COPYRIGHT THE CONARD-PYLE CO.

CHRISTOPHER STONE
Copyright The Conard-Pyle Co.



SNOWBIRD

SOUTHPORT—One of the finest red roses introduced in recent years. Color is bright red with a hint of gold at the heart of the bloom.

SOUV. DE JEAN SOUPERT—One of the most popular new yellows. Coppery yellow with good form. Vigorous; glossy foliage.

SOUVE. DE MME. C. CHAMBARD—A lovely rose with very large long pointed buds, opening to perfectly double flowers of bright coral pink with a satiny peach tint. A strong grower and free bloomer.

SNOWBIRD—One of the most prolific, pure white bedding roses. Full petaled, perfectly formed and fragrant.

SUNSTAR—Orange yellow flower washed with red. Long, magnificent bud. Very fragrant.

SUSAN LOUISE—Buds are fine formed, long and slender and are clear pink in color. The stems are long and firm and the plant itself is a prolific bloomer.

TALISMAN—A most popular rose; fine for cutting. A color combination of orange, yellow, rose-red and scarlet on a background of rich old gold.

VESUVIUS—A single rose of dark velvety red generally in clusters. Vigorous, free blooming.

VIERLANDEN—Pure pink of perfect form. Upright plant. Vigorous. Very fragrant. Superb for cutting.

BEAUTIFUL CLIMBING ROSES

For the trellis, porch or arbor, the Climbing Roses produce a most wonderful covering of delicate foliage and delightful flowers.

CLI. MME. CECILE BRUNNER—Small, perfectly double, exquisitely formed soft rose-pink flowers borne in clusters. A vigorous climber and a persistent bloomer.

CLI. DAINTY BESS—Single. Crinkled petals of apple-blossom pink; dark stamens.

CLI. ETOILE DE HOLLAND—The beautiful perfectly formed oval buds open into magnificent brilliant red blooms.

CLI. HADLEY—Large fragrant flowers of intense rich scarlet, shading to velvety-crimson.

CLI. K. A. VICTORIA—A favorite old white rose; double fragrant flowers of ivory white.

PAUL'S SCARLET—The most popular of all red climbing roses. Vivid scarlet flowers of large size, produced in clusters.

CLI. PRES. HOOVER—A glorious rose with charming color combinations of cerise-pink, flame, scarlet and gold.

CLI. TALISMAN—A climbing sport of the popular bush form. A mixture of orange, yellow, rose-red, scarlet and gold.

ORNAMENTAL AND SHADE TREES



CUTLEAF WEEPING BIRCH

By all means plant shade trees. They are effective ornamentally from the time they are set out and soon their spreading growth will create a sheltered environment for the home that will be a pride and joy with the passing years.

BIRCH

Cutleaf Weeping—A very graceful and clean appearing tree with its white bark and slender drooping branches and deeply cleft leaves. 5-6 ft. \$1.00; 6-8 ft. \$1.50; 8-10 ft. \$2.00; 10-12 ft. \$2.50.

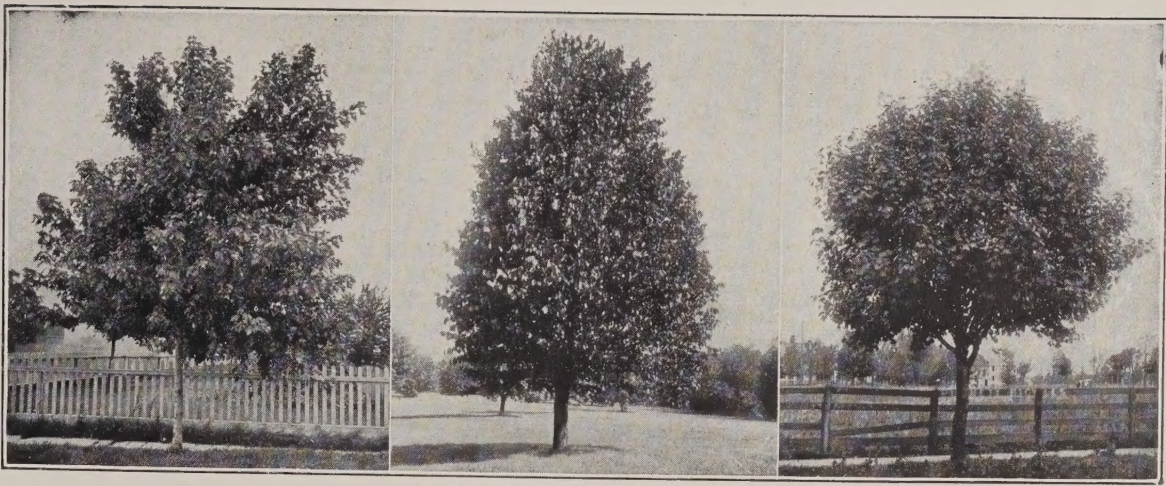
European—Leaves similar to Poplar. White bark and of pyramidal form. A fine street tree and very hardy. 5-6 ft. \$1.00; 6-8 ft. \$1.50; 8-10 ft. \$2.00; 10-12 ft. \$2.50.

BOXELDER

Silver Variegated—Very showy and will stand out very bright in a planting. Grafted trees, 5-6 ft. \$1.50 each; 4-5 ft. \$1.25 each.

CATALPA

Speciosa (Western Catalpa)—A rapid growing tree with very large leaves, a nice clean bark and large white flower heads followed by long bean-shaped seed pods. 6-8 ft. trees, \$2.00.



(Silverleaf)

MAPLE TREES
(Schwedler)

(Norway)

Bungii (Umbrella Tree)—Grafted heads that form into a wide umbrella shape. Very desirable for street planting or as specimens in the lawn. 5-6 ft. standards, 2-yr. heads, \$2.50 each.

ELM

Chinese (*Ulmus Pumila*)—A rapid growing tree with a dense head. Extremely hardy, thriving in almost any soil. 5-6 ft. \$1.00 each; 6-8 ft. \$1.50 each.

GOLDENCHAIN (*Laburnum Vulgare*)

Beautiful small tree with clover-shaped leaves; flowers are fragrant long chains of golden yellow. 5-6 ft. \$1.50 each; 6-8 ft. \$2.00 each.

LINDEN (*Basswood*)

European—Large, full heads. Large leaves similar to Catalpa. A good street tree. 5-6 ft. \$1.50; 6-8 ft. \$2.00.

LOCUST (*Robinia*)

Honey Locust (*Gleditsia Triacanthus*)—Of much slower growth than the black locust. Small round leaves similar to pepper trees. Very attractive and desirable as an ornamental tree. 6-8 ft. \$1.50 each.

MAPLE (*Acer*)

Norway (*Platanoides*)—Large rapid growing tree that will cast a dense shade. 5-6 ft. \$1.00; 6-8 ft. br. \$1.25; 8-10 ft. \$1.50.

Schwedler—Very similar to the Norway maple except the leaves are purple. 5-6 ft. \$1.25; 6-8 ft. \$1.50; 8-10 ft. \$2.00.

Dasycarpum (Silver Maple)—Rather slim type with silvery bark and light green leaves. 5-6 ft. \$1.00 each; 6-8 ft. \$1.25 each.

Lace-Leaf Silver Maple—A most beautiful tree, with finely cut silvery foliage. The slender branches give this tree a graceful appearance equal to Cutleaf Weeping Birch. 5-6 ft. \$1.25; 6-8 ft. \$1.50.

MOUNTAIN ASH (*Sorbus*)

Aucuparia—Narrow erect tree. Beautiful clusters of red berries in August. 5-6 ft. \$1.00; 6-8 ft. \$1.25 each; 8-10 ft. \$1.50.

POPLAR (*Populus*)

Lombardy (*P. nigra italica*)—Tall, narrow growth. With age becomes one of the most striking and picturesque trees. 6-8 ft. \$1.00; 8-10 ft. \$1.25 each.

PLANE TREE, *Platanus* (*Sycamore*)

Orientalis—An evenly branched tree with rather broad head. A fine stately type. 5-6 ft. \$1.25 each; 6-8 ft. \$1.50 each; 8-10 ft. \$2.00 each.

REDBUD

Cercis Canadensis—Similar in effect to Hawthorne but of more regular growth. Clusters of rosy pink flowers cover the plant in May. 5-6 ft. \$1.00; 6-8 ft. \$1.50.

TULIP TREE (*Liriodendron*)

Tulipifera—Handsome upright tree with bluish green foliage and greenish colored, tulip shaped flowers. 6-8 ft. \$1.50 each; 5-6 ft. \$1.25 each.

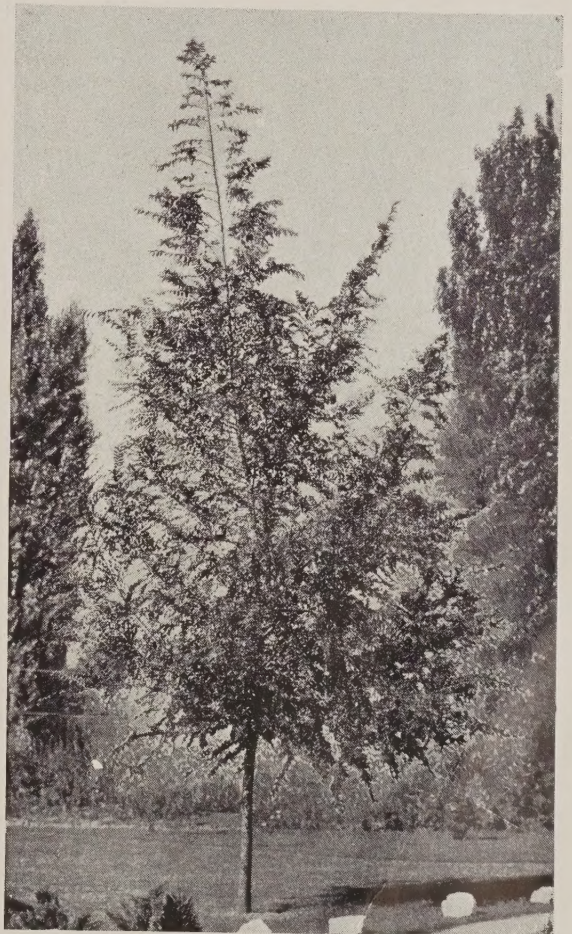
WILLOW (*Salix*)

Babylonica—The most effective large growing tree of all. 5-6 ft. \$1.00; 6-8 ft. \$1.25 each.

Niobe—Golden bark, graceful weeping habit. 5-6 ft. \$1.00; 6-8 ft. \$1.25 each.

WALNUT

Black—Large headed trees that will afford an abundance of shade. 6-8 ft. \$1.00 each.



CHINESE ELM



JOANNA HILL

**CARLTON'S
SPECIAL
COLLECTIONS**

No. 1
Six
Two-year No. 1 Grade
\$4.00

SOLD OUT
FOR THIS SEASON

ETOILLE
DE HOLLANDE

No. 2
Ten
Two-year No. 1 Grade
THESE SIX AND FOUR
PICTURED ON PAGES 20-21
\$6.50

SOLD OUT
FOR THIS SEASON

K. A. VICTORIA

MRS. E. P. THOM

EDITOR McFARLAND

MME. JOSEPH PERRAUD